

Features

5/21/2012

Cheap Tricks: Goodwill Hunting

Ellen C. Wells



Like an

abandoned barn or shuttered Eastern Bloc factory, second-hand stores such as Goodwill and the Salvation Army are filled with unknown treasures. Old chairs and bureaus make great merchandising fixtures. Typewriters, books and kitchen gadgets give those much-needed added accents. But don't forget the clothes and accessories! Whether it's shirts for scarecrows or shoes for succulents, charity-based second-hand stores are brimming with possibilities—and for cheap prices, too.

1 Wardrobe, Please!

Baker's Acres in Alexandria, Ohio, has put a whole wardrobe to good use! Denim shirt, shoes and a handbag—even the cups of a bra are used to cradle some plants. Those folks at Baker's always have something to make you grin.

2 It Mat-ters

Texture and color can also be found in bath mats, place mats or even doormats, items you can easily pick up at second-hand shops or dollar stores.

3 Done In Denim

Want your plants to walk out the door? Give 'em some legs! Old jeans can dress up the bottom of ordinary green pots. Now, the question is, do they come in your size?

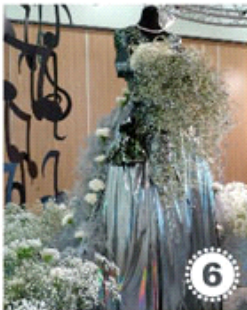


4 Sparkle Time

String costume jewelry from lighting, lay across countertops, wind around pots—it's incredibly versatile. You might want to check the value of it first—some of that stuff is collectible!

5 Sew What?

These containers are wrapped in segments of jeans sewn together—an easy task for any tailor you have on staff. Come to think of it, the pockets are a great place to hide a spare key!



6 Add a Little Elegance

Old prom and bridesmaid gowns DO have a second use—adding some high class to an elegant display.

7 Surf's Up

Beach themes are a popular display idea, especially during the early

summer months. Make your beach scene really zing with beach attire, such as swim trunks out on a line to dry.

8 Woolly Wrap

Knits add texture, color and flair to whatever they are wrapped around (including yourself!). Grab some old sweaters or scarves from Goodwill, cut them into strips, and get wrapping. **GP**